

# Intelligent Solar Street Light Smart Energy Storage System

## **NOVA FUTURE TECHNOLOGY LIMITED**

Address : 5F, Building A, B & C, Huiheng Industrial Park, NO.1 Fenghuang  
West Rd, Humen Town Dongguan City, Guangdong,China.

Website : <http://www.novafuture.net>

Telephone : +86-15013537907

# Better Light Better Energy



- Solar Street Light
- Solar Garden Light
- AC LED street light
- Solar Camera
- Portable Power Station
- Energy Storage Battery



# Nova Future

---



Nova Future  
**CONTENTS**

**0**    **Company Profile**

**1**

Company Introduction	01
Certificates	02
Showroom & Workshop	05
Quality Control	07

**02**    **Main Products**

All in One Solar Street Light	09
All in Two Solar Street Light	20
Solar Garden Light	33
AC LED street Light	37
Solar Camera	38
Lithium Battery of Solar Light	41
Portable Power Station	44
Energy Storage Battery	47



## Company Profile

Nova Future Technology Limited established in 2011 is a photovoltaic enterprise specializing in the R&D of solar light and energy storage system, as well as the production and sales of solar lights and energy storage batteries. Since its establishment, the company has established the concept of 'quality priority and brand management', and has taken simple use, convenient maintenance, and reliable quality as the product design concept, and has obtained a number of national patents. Nova Future provides high-quality solar products and solar power solutions for more than 90 countries and regions around the world. The company actively participates in international and domestic relevant quality standard certification, and now products have passed the national standard 1S09001-2008 quality system certification, and obtained a variety of international certification standards, CQC, CE, ROHS, IEC, TUV, SGS, etc.

Nova Future develops and produces many new

products, including integrated solar street lights, split solar street lights, portable solar home systems, energy storage lithium batteries and other solar products.

Nova Future products are easy to operate, easy to maintain, and everyone can be an engineer. The products cover the requirements of most customers for the use of solar energy systems. Especially high-quality solar street lights have been widely used in many rural townships, courtyards and roads, as well as municipal highways. The products have the most comprehensive and professional characteristics in the industry. . Nova Future provides ODM&OEM services to help partners establish their own brands in the world.

Nova Future is very confident to work with its partners to 'CLEAN THE WORLD BY GREEN ENERGY'.

# Company Honors

TRUSTED FOR OUR STANDARDS



## Certificate of Registration

This is to certify that the Environmental Management System of

**Nova Future (Shenzhen) Technology Co., LTD**  
 Unified social credit code: 91441900MA5471CK6F  
 Registered Address: Room 372, 3rd Floor, Building 23, Keyuan West, No.1 Keshi West Road, Nanshan District, Shenzhen, China  
 Office & Production Address: Room 372, 3rd Floor, Building 23, Keyuan West, No.1 Keshi West Road, Nanshan District, Shenzhen, China

Has been independently assessed and is compliant with the requirements of:

### ISO 14001:2015

For the following scope of activities:  
**R&D, Production and Sales of Lithium Batteries**

Certificate Number: 21ACM12407R

Date of initial registration: 03/02/2021  
 Certificate expiry: 02/02/2024  
 (subject to the company maintaining its system to the required standard)

AUTHORISED SIGNATORY  
 Date of this certificate 03/02/2021, VI



ACM-CCAS Limited, Unit 5 Meixi Court, Meixian Business Park, Leicester, LE19 1U, UK  
 Local Office: ACM-CCAS (UK) Ltd, 8th Floor, No. 333, Wenhua Road, Minhang District, Shanghai 201119, China  
 T: +86 21 64331802 F: +86 21 64881099 W: www.acmcert.com.cn E: info@acmcert.com.cn

BST A RELIABLE TESTING FOR TRUST

## Certificate of Compliance

Certificate No.: BSTXD190412536401EC-R1

Applicant: **NOVAFUTURE (SHENZHEN) TECHNOLOGY CO., LTD**  
 RM500, 3rd Building, A Block, HoonBerg Creative Park, Panyu District, Guangzhou city, Guangdong Province, PRC 511490

Manufacturer: **NOVAFUTURE (SHENZHEN) TECHNOLOGY CO., LTD**  
 9/F, F Building, No.368, Electricity Mall, Dong'an North Road, Quzhen Town, Zhongshan City, Guangdong province, PR China, 528500

Product Name: **NOVAFUTURE (SHENZHEN) TECHNOLOGY CO., LTD**  
 Main Test Model: TT-318  
 Additional Model: TT-319, TT-320

Test Standard: **EN 50165-2:2013/AM1:2015**  
**EN1050-3-2:2014**  
**EN1050-3-2:2013**

As shown in the Test Report No.: **BSTXD190412536401EC-R1**

The EUT described above has been tested by us with the listed standards and found in compliance with the council EMC directive 2014/30/EU. It is possible to use CE marking to demonstrate the compliance with this EMC Directive.  
 The certificate applies to the tested sample above mentioned only and shall not imply an assessment of the whole production.



Christina Deng  
 Manager  
 Apr. 22, 2019

BST Technology (Shenzhen) Co., Ltd.  
 Add: No. 7, New Era Industrial Zone, Canteen, Xixun District, Shenzhen, Guangdong, China  
 Certificate Search: <http://www.bstlab.com>, Tel: 400-882-8628, 800699305, E-mail: china@bstlab.com

TCT 通测检测



## UN38.3 Test Report

### UN38.3 检测报告

Version: V1.0

Applicant's name 委托方名称	Nova Future (Shenzhen) Technology Co., LTD 诺瓦未来(深圳)科技有限公司
Applicant's Address 委托方地址	Room 372, 3rd Floor, Building 23, Keyuan West Road, Nanshan District, Shenzhen, China 深圳市福田区粤海街道科技园社区和智西路1号 诺瓦未来23栋3层372
Name of Sample 样品名称	LiFePO4 Battery pack 磷酸铁锂电池组
Model 型号	51.2V 100AH 5120Wh
Testing Laboratory 测试实验室	Shenzhen TCT Testing Technology Co., Ltd. 深圳市通测检测技术有限公司 2101 & 2201, Zhenchang Factory, Renshan Industrial Zone, Futah Subdistrict, Baoan District, Shenzhen, Guangdong, China 广东省深圳市宝安区福海街道桥头社区松山工业区展成鞋制品厂2101、2201
Report No. 报告编号	TCT200828015
Date of Issue 签发日期	2022.09.06
Test Conclusion 测试结论: The test results are qualified. 测试结果为合格。	

Tested by 主检人: *Vicky Chen 陈洁洁* Approved by 批准人: *Tomy 冯瑞浩*

Inspected by 审核人: *Ang 吴 俊* Seal of TCT 报告单位(盖章)

Report No. 报告编号: TCT200828015 E-mail: tom@tct-lab.com Page 1 第 1 页  
 Hotline: 400-661-140 Tel: 86-755-27673339

证书号第 1K254761 号



## 实用新型专利证书

实用新型名称: 一种储能一体机框

发明人: 阮志武; 郭家楼; 周志刚; 曾余军; 刘斌; 吴树建; 高林东; 何芬团

专利号: ZL 2022 2 20162099.1

专利申请日: 2022年08月01日

专利权人: 华朗未来(深圳)科技有限公司

地址: 深圳市福田区粤海街道科技园社区和智西路1号 科苑前23栋3层372

授权公告日: 2023年01月10日 授权公告号: CN 216274942 U

国家和知识产权局依照中华人民共和国专利法经过初步审查, 决定授予专利权, 颁发实用新型专利证书并在专利登记簿上予以登记。专利权自授权公告之日起生效, 专利期限为十年, 自申请日起算。

专利法规定专利权登记簿的记载状况, 专利权的转移、质押、无效、终止、恢复和专利权的姓名或者名称、国籍、地址变更等事项记载在专利登记簿上。

局长 申长雨



第 1 页 (共 2 页)

其他事项参见续页

TRUSTED FOR OUR STANDARDS



## Certificate of Registration

This is to certify that the Quality Management System of

**Nova Future (Shenzhen) Technology Co., LTD**  
 Unified social credit code: 91441900MA5471CK6F  
 Registered Address: Room 372, 3rd Floor, Building 23, Keyuan West, No.1 Keshi West Road, Nanshan District, Shenzhen, China  
 Office & Production Address: Room 372, 3rd Floor, Building 23, Keyuan West, No.1 Keshi West Road, Nanshan District, Shenzhen, China

Has been independently assessed and is compliant with the requirements of:

### ISO 9001:2015

For the following scope of activities:  
**R&D, Production and Sales of Lithium Batteries**

Certificate Number: 21ACM12407Q

Date of initial registration: 03/02/2021  
 Certificate expiry: 02/02/2024  
 (subject to the company maintaining its system to the required standard)

AUTHORISED SIGNATORY  
 Date of this certificate 03/02/2021, VI



ACM-CCAS Limited, Unit 5 Meixi Court, Meixian Business Park, Leicester, LE19 1U, UK  
 Local Office: ACM-CCAS (UK) Ltd, 8th Floor, No. 333, Wenhua Road, Minhang District, Shanghai 201119, China  
 T: +86 21 64331802 F: +86 21 64881099 W: www.acmcert.com.cn E: info@acmcert.com.cn





SHOWROOM





# WORKSHOP »





DL

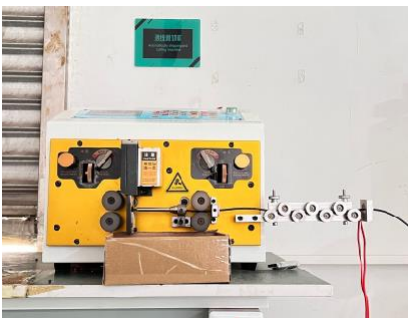
# PRODUCT PROCESS QUALITY ASSURANCE



Automatic double-sided spot welder for cylindrical battery pack



Solar Module Tester



Automatically stripping and cutting machine



BMS Tester





Battery cell sorting machine



Laser engraving machine



LED SMT machine



Solar street light aging line



Battery cell capacity dividing cabinet



Battery comprehensive testing system



Battery packs aging machine



Battery packs aging machine



Automatic fan blowing machine



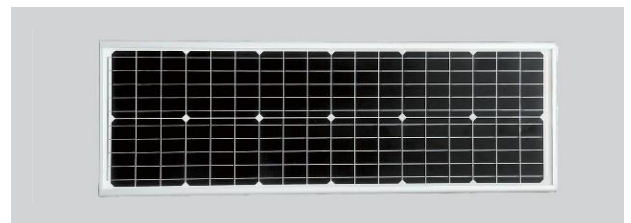
# All in One Solar Street Light



## ■ All in One Solar Street light NF-YT

### Features:

- ✔ Simple and stylish appearance is simple. 0 electricity, free wiring.
- ✔ Safe low voltage, no touch electricity, international safety standards.
- ✔ Lithium battery, controller and light source are integrated, very simple installation.
- ✔ Multi-core LED, extremely high efficient, more than 200LM/W for unit LED.
- ✔ Smart charge and discharge management, extend the lighting time, ensure lighting for 365 days
- ✔ Modular design, easy maintenance and replacement.



Model NO.	NF-YT-20	NF-YT-30	NF-YT-40	NF-YT-50	NF-YT-60
Lamp Power	20W	30W	40W	50W	60W
Solar Panel	50W	60W	70W	80W	90W
Lithium Battery	154WH	230WH	307WH	384WH	460WH
LED Quantity	140pcs	140pcs	140pcs	140pcs	140pcs
Luminous Flux	3200lm	4800lm	6400lm	8000lm	9600lm
CCT	3000-6500K				
CRI	>70Ra				
Charging Time	4-6 hours				
Working Time	2-4 rainy days				
Working Temperature	-20°C~60°C				
Lifespan	≥50000hours				
Material	Aluminum alloy				
IP Rating	IP65				
Case Diameter	60-70mm				
Mounting Height	8-12m	8-12m	10-12m	10-15m	10-15m
Mounting Distance	25-35m	25-40m	30-40m	30-40m	30-50m

## ■ All in One Solar Street light NF-YT

### Features:

- ✔ Simple and stylish appearance is simple. 0 electricity, free wiring.
- ✔ Safe low voltage, no touch electricity, international safety standards.
- ✔ Lithium battery, controller and light source are integrated, very simple installation.
- ✔ Multi-core LED, extremely high efficient, more than 200LM/W for unit LED.
- ✔ Smart charge and discharge management, extend the lighting time, ensure lighting for 365 days
- ✔ Modular design, easy maintenance and replacement.

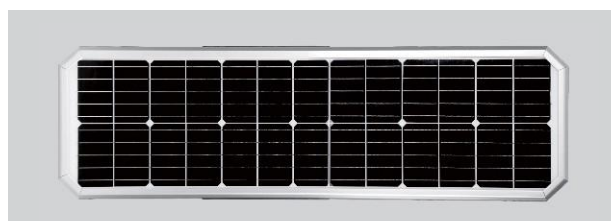
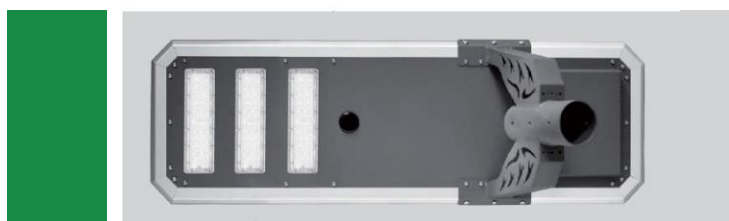


Model NO.	NF-YT-80	NF-YT-100	NF-YT-120	NF-YT-150	NF-YT-200
Lamp Power	80W	100W	120W	150W	200W
Solar Panel	120W	140W	180W	240W	300W
Lithium Battery	614WH	768WH	922WH	1280WH	1536WH
LED Quantity	280pcs	280pcs	280pcs	560pcs	560pcs
Luminous Flux	12800lm	15000lm	18000lm	22500lm	30000lm
CCT	3000-6500K				
CRI	>70Ra				
Charging Time	4-6 hours				
Working Time	2-4 rainy days				
Working Temperature	-20°C~60°C				
Lifespan	≥50000hours				
Material	Aluminum alloy				
IP Rating	IP65				
Case Diameter	60-70mm				
Mounting Height	8-12m	8-12m	10-12m	10-15m	10-15m
Mounting Distance	25-35m	25-40m	30-40m	30-40m	30-50m

## ■ All in One Solar Street light NF-YT-B

### Features:

- ✔ Simple and stylish appearance is simple. 0 electricity, free wiring.
- ✔ Safe low voltage, no touch electricity, international safety standards.
- ✔ Lithium battery, controller and light source are integrated, very simple installation.
- ✔ Multi-core LED, extremely high efficient, more than 200LM/W for unit LED.
- ✔ Smart charge and discharge management, extend the lighting time, ensure lighting for 365 days
- ✔ Modular design, easy maintenance and replacement.

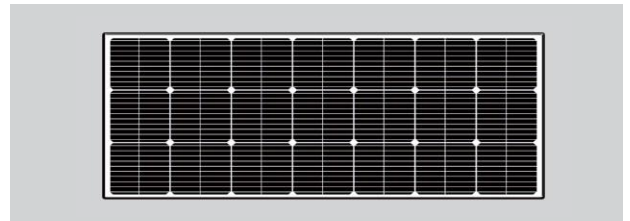
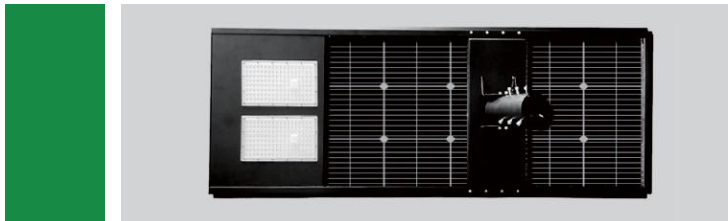


Model NO.	NF-YT-B30	NF-YT-B40	NF-YT-B60	NF-YT-B80	NF-YT-B100
Lamp Power	30W	40W	60W	80W	100W
Solar Panel	70W	80W	90W	100W	120W
Lithium Battery	308WH	384WH	540WH	614WH	690WH
LED Quantity	140pcs	140pcs	280pcs	420pcs	420pcs
Luminous Flux	4800lm	6400lm	9600lm	12600lm	15000lm
CCT	3000-6500K				
CRI	>70Ra				
Charging Time	4-6 hours				
Working Time	2-4 rainy days				
Working Temperature	-20°C~60°C				
Lifespan	≥50000hours				
Material	Aluminum alloy				
IP Rating	IP65				
Case Diameter	60-70mm				
Mounting Height	4-6m	5-7m	6-10m	8-12m	8-12m
Mounting Distance	15-20m	20-25m	20-40m	25-35m	25-35m



## Features:

- ✔ Simple and stylish appearance is simple. 0 electricity, free wiring.
- ✔ Safe low voltage, no touch electricity, international safety standards.
- ✔ Lithium battery, controller and light source are integrated, very simple installation.
- ✔ Multi-core LED, extremely high efficient, more than 200LM/W for unit LED.
- ✔ Smart charge and discharge management, extend the lighting time, ensure lighting for 365 days
- ✔ Modular design, easy maintenance and replacement.



Model NO.	NF-YT-L30	NF-YT-L40	NF-YT-L60	NF-YT-L80	NF-YT-L100	NF-YT-L120
Lamp Power	30W	40W	60W	50W	100W	120W
Solar Panel	60W	70W	90W	80W	150W	180W
Lithium Battery	230WH	307WH	460WH	384WH	768WH	922WH
LED Quantity	140pcs	140pcs	140pcs	140pcs	280pcs	560pcs
Luminous Flux	4800lm	6400lm	9600lm	12800lm	16000lm	21600lm
CCT	3000-6500K					
CRI	>70Ra					
Charging Time	4-6 hours					
Working Time	2-4 rainy days					
Working Temperature	-20°C~60°C					
Lifespan	≥50000hours					
Material	Aluminum alloy					
IP Rating	IP65					
Case Diameter	60-70mm					
Mounting Height	4-6m	5-7m	6-8m	7-10m	8-12m	9-12m
Mounting Distance	15-20m	20-25m	20-30m	20-30m	25-35m	30-35m

## All in One Solar Street light NF-YT-T

### Features:

- ✔ Simple and stylish appearance is simple. 0 electricity, free wiring.
- ✔ Safe low voltage, no touch electricity, international safety standards.
- ✔ Lithium battery, controller and light source are integrated, very simple installation.
- ✔ Multi-core LED, extremely high efficient, more than 200LM/W for unit LED.
- ✔ Smart charge and discharge management, extend the lighting time, ensure lighting for 365 days
- ✔ Modular design, easy maintenance and replacement.



### General Specifications

Model NO.	NF-YT-T20	NF-YT-T30	NF-YT-T40
Lamp Power	20W	30W	40W
Solar Panel	40W	50W	65W
Lithium Battery	154WH	230WH	307WH
LED Quantity	8pcs 5050	16pcs 5050	24pcs 5050
Luminous Flux	3400lm	5100lm	6800lm
CCT	3000-6500K		
CRI	>70Ra		
Charging Time	4-6 hours		
Working Time	2-4 rainy days		
Working Temperature	-20°C~60°C		
Lifespan	≥50000hours		
Material IP Rating	Die-casting Aluminum		
Case Diameter	IP65		
Mounting Height	60mm		
Mounting Distance	4-6m	5-7m	6-8m
	15-20m	15-25m	20-25m

## ■ All in One Solar Street light NF-YT-D

### Features:

- ✔ Simple and stylish appearance is simple. 0 electricity, free wiring.
- ✔ Safe low voltage, no touch electricity, international safety standards.
- ✔ Lithium battery, controller and light source are integrated, very simple installation.
- ✔ Multi-core LED, extremely high efficient, more than 200LM/W for unit LED.
- ✔ Smart charge and discharge management, extend the lighting time, ensure lighting for 365 days
- ✔ Modular design, easy maintenance and replacement.



Model NO.	NF-YT-D20	NF-YT-D30	NF-YT-D40	NF-YT-D60	NF-YT-D80
Lamp Power	20W	30W	40W	60W	80W
Solar Panel	50W	60W	80W	100W	120W
Lithium Battery	230WH	307WH	384WH	540WH	614WH
LED Quantity	60pcs	90pcs	120pcs	150pcs	180pcs
Luminous Flux	3600lm	4800lm	6400lm	9600lm	12800lm
CCT	3000-6500K				
CRI	>70Ra				
Charging Time	4-6 hours				
Working Time	2-4 rainy days				
Working Temperature	-20 ~-60				
Lifespan	≥50000hours				
Material	Aluminum alloy				
IP Rating	IP65				
Case Diameter	60mm				
Mounting Height	4-5m	5-6m	5-7m	6-9m	7-10m
Mounting Distance	10-20m	10-20m	15-25m	15-30m	20-30m

## All in One Solar Street light NF-YT-E\_



### General Specifications

Model NO.	NF-YT-E40	NF-YT-E60	NF-YT-E80	NF-YT-E100	NF-YT-E120
Lamp Power	40W	60W	80W	100W	120W
Solar Panel	80W	100W	120W	150W	180W
Lithium Battery	384WH	460WH	614WH	768WH	922WH
LED Quantity	120pcs 5050	120pcs	240pcs 5050	240pcs 5050	240pcs 5050
Luminous Flux	7200lm	10800lm	14400lm	18000lm	21600lm
CCT	3000-6500K				
CRI	>70Ra				
Charging Time	4-6 hours				
Working Time	2-4 rainy days				
Working Temperature	-20°C~60°C				
Lifespan	≥50000hours				
Material	Die-casting Aluminum				
IP Rating	IP65				
Case Diameter	60-70mm				
Mounting Height	6-8m				
Mounting Distance	6-8m	6-8m	10-12m	10-15m	10-15m
	25-35m	25-35m	25-40m	30-40m	30-50m

## All in One Solar Street light NF-YT-F



### General Specifications

Model NO.	NF-YT-F40	NF-YT-F60	NF-YT-F80	NF-YT-F100	NF-YT-F120
Lamp Power	40W	60W	80W	100W	120W
Solar Panel	80W	100W	120W	150W	180W
Lithium Battery	384WH	460WH	614WH	768WH	922WH
LED Quantity	120pcs 5050	120pcs	240pcs 5050	240pcs 5050	240pcs 5050
Luminous Flux	7200lm	10800lm	14400lm	18000lm	21600lm
CCT	3000-6500K				
CRI	>70Ra				
Charging Time	4-6 hours				
Working Time	2-4 rainy days				
Working Temperature	-20°C~60°C				
Lifespan	≥50000hours				
Material	Die-casting Aluminum				
IP Rating	IP65				
Case Diameter	60-70mm				
Mounting Height	6-8m				
Mounting Distance	6-8m	6-8m	10-12m	10-15m	10-15m
	25-35m	25-35m	25-40m	30-40m	30-50m

# All in One Solar Street light NF-YT-G



## General Specifications

Model NO.	NF-YT-G40	NF-YT-G60	NF-YT-G80	NF-YT-G100	NF-YT-G120	NF-YT-G150
Lamp Power	40W	60W	80W	100W	120W	150W
Solar Panel	80W	100W	120W	150W	180W	210W
Lithium Battery	384WH	460WH	614WH	768WH	922WH	1228WH
LED Quantity	48pcs*2 module	48pcs*2 module	48pcs*2 module	48pcs*3 module	48pcs*3 module	48pcs*4 module
Luminous Flux	8000lm	11400lm	16000lm	20000lm	22800lm	28500lm
CCT	3000-6500K					
CRI	>70Ra					
Charging Time	4-6 hours					
Working Time	2-4 rainy days					
Working Temperature	-20°C~60°C					
Lifespan	≥50000hours					
Material	Die-casting Aluminum					
IP Rating	IP65					
Mounting Height	60-70mm					
Mounting Distance	6-8m	6-8m	8-12m	10-12m	10-15m	10-15m
	25-35m	25-35m	25-40m	30-40m	30-40m	30-50m

# All in One Solar Street light NF-YT-H



## General Specifications

Model NO.	NF-YT-H40	NF-YT-H60	NF-YT-H80	NF-YT-H100	NF-YT-H120	NF-YT-H150
Lamp Power	40W	60W	80W	100W	120W	150W
Solar Panel	80W	100W	120W	150W	180W	210W
Lithium Battery	384WH	460WH	614WH	768WH	922WH	1228WH
LED Quantity	48pcs*2 module 48pcs*2 module 48pcs*2 module 48pcs*3 module 48pcs*3 module 48pcs*4 module					
Luminous Flux	8000lm	11400lm	16000lm	20000lm	22800lm	28500lm
CCT	3000-6500K					
CRI	>70Ra					
Charging Time	4-6 hours					
Working Time	2-4 rainy days					
Working Temperature	-20°C~60°C					
Lifespan Material	≥50000hours					
IP Rating Case	Die-casting Aluminum					
Diameter	IP65					
Mounting Height	60-70mm					
Mounting Distance	6-8m	6-8m	8-12m	10-12m	10-15m	10-15m
	25-35m	25-35m	25-40m	30-40m	30-40m	30-50m

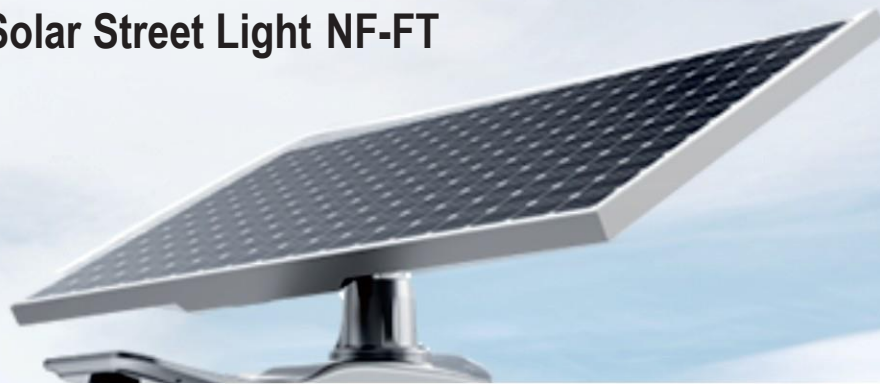


---

## All in Two Solar Street Light



## ■ All in Two Solar Street Light NF-FT



### Features:

- ✔ Simple and stylish appearance is simple. 0 electricity, free wiring.
- ✔ Safe low voltage, no touch electricity, international safety standards.
- ✔ Lithium battery, controller and light source are integrated, very simple installation.
- ✔ Multi-core LED, extremely high efficient, more than 200LM/W for unit LED.
- ✔ Smart charge and discharge management, extend the lighting time, ensure lighting for 365 days
- ✔ Modular design, easy maintenance and replacement.



Model NO.	NF-FT-30	NF-FT-40	NF-FT-60	NF-FT-80
Lamp Power	30W	40W	60W	80W
Solar Panel	80W	100W	120W	150W
Lithium Battery	307WH	384WH	460WH	540WH
LED Quantity	140pcs	140pcs	140pcs	140pcs
Luminous Flux	5100lm	6400lm	9600lm	12000lm
CCT	3000-6500K			
CRI	>70Ra			
Charging Time	4-6 hours			
Working Time	2-4 rainy days			
Working Temperature	-20°C~60°C			
Lifespan	≥50000hours			
Material IP Rating	Die-casting Aluminum			
Case Diameter	IP65			
Mounting Height	60mm			
Mounting Distance	5-6m	6-8m	7-9m	8-10m
	15-25m	15-25m	20-25m	20-30m

# Split Solar Street Light



## ■ Split Solar Street Light NF-XY1

### Features:

- ✔ Simple and stylish appearance is simple. 0 electricity, free wiring.
- ✔ Safe low voltage, no touch electricity, international safety standards.
- ✔ Lithium battery, controller and light source are integrated, very simple installation.
- ✔ Multi-core LED, extremely high efficient, more than 200LM/W for unit LED.
- ✔ Smart charge and discharge management, extend the lighting time, ensure lighting for 365 days
- ✔ Modular design, easy maintenance and replacement.



## ■ General Specifications

Model NO.	NF-XY1-20	NF-XY1-30	NF-XY1-40	NF-XY1-60	NF-XY1-80
Lamp Power	20W	30W	40W	60W	80W
Solar Panel	60W	80W	100W	120W	150W
Lithium Battery	230WH	384WH	460WH	614WH	921WH
LED Quantity	120pcs	120pcs	150pcs	150pcs	150pcs
Luminous Flux	3200lm	4800lm	6400lm	9000lm	12000lm
CCT	3000-6500K				
CRI	>70Ra				
Charging Time	4-6 hours				
Working Time	2-4 rainy days				
Working Temperature	-20°C~60°C				
Lifespan	≥50000hours				
Material	Aluminum alloy				
IP Rating	IP65				
Case Diameter	60-70mm				
Mounting Height	4-6m	4-6m	5-7m	5-8m	8-12m
Mounting Distance	15-20m	15-25m	20-25m	20-30m	25-35m

# Split Solar Street Light NF-XY2

## Features:

- ✔ Simple and stylish appearance is simple. 0 electricity, free wiring.
- ✔ Safe low voltage, no touch electricity, international safety standards.
- ✔ Lithium battery, controller and light source are integrated, very simple installation.
- ✔ Multi-core LED, extremely high efficient, more than 200LM/W for unit LED.
- ✔ Smart charge and discharge management, extend the lighting time, ensure lighting for 365 days
- ✔ Modular design, easy maintenance and replacement.



Model NO.	NF-XY2-100	NF-XY2-120	NF-XY2-150	NF-XY2-200
Lamp Power	100W	120W	150W	200W
Solar Panel	200W	300W	400W	500W
Lithium Battery	1280WH	1440WH	1800WH	2560WH
LED Quantity	112pcs	168pcs	168pcs	224pcs
Luminous Flux	14000lm	16000lm	21000lm	28000lm
CCT	3000-6500K			
CRI	>70Ra			
Charging Time	4-6 hours			
Working Time	2-4 rainy days			
Working Temperature	-20°C~60°C			
Lifespan	≥50000hours			
Material IP Rating	Die-casting Aluminum			
Case Diameter	IP65			
Mounting Height	60mm			
Mounting Distance	8-12m	10-12m	10-15m	12-15m
	30-40m	30-40m	30-40m	30-40m

## Features:

- ✔ Simple and stylish appearance, is simple. 0 electricity, free wiring.
- ✔ Safe low voltage, no touch electricity, international safety standards.
- ✔ Lithium battery, controller and light source are integrated, very simple installation.
- ✔ Multi-core LED, extremely high efficient, more than 200LM/W for unit LED.
- ✔ Smart charge and discharge management, extend the lighting time, ensure lighting for 365 days
- ✔ Modular design, easy maintenance and replacement.



Model NO.	NF-CS-15	NF-CS-20	NF-CS-30	NF-CS-40
Lamp Power	15W	20W	30W	40W
Solar Panel	50W	60W	70W	80W
Lithium Battery	192WH	230WH	307WH	384WH
LED Quantity	69pcs 5054	69pcs 5054	81pcs 5054	81pcs 5054
Luminous Flux	2700lm	3600lm	5600lm	6800lm
CCT	3000-6500K			
CRI	>70Ra			
Charging Time	4-6 hours			
Working Time	2-4 rainy days			
Working Temperature	-20°C~60°C			
Lifespan	≥50000hours			
Material IP Rating	Die-casting Aluminum			
Case Diameter	IP65			
Mounting Height	60mm			
Mounting Distance	4-6m	5-6m	5-7m	5-8m
	15-20m	15-20m	15-25m	20-25m

# ■ SOLAR WRAP



## ■ Specification for vertical solar panel:



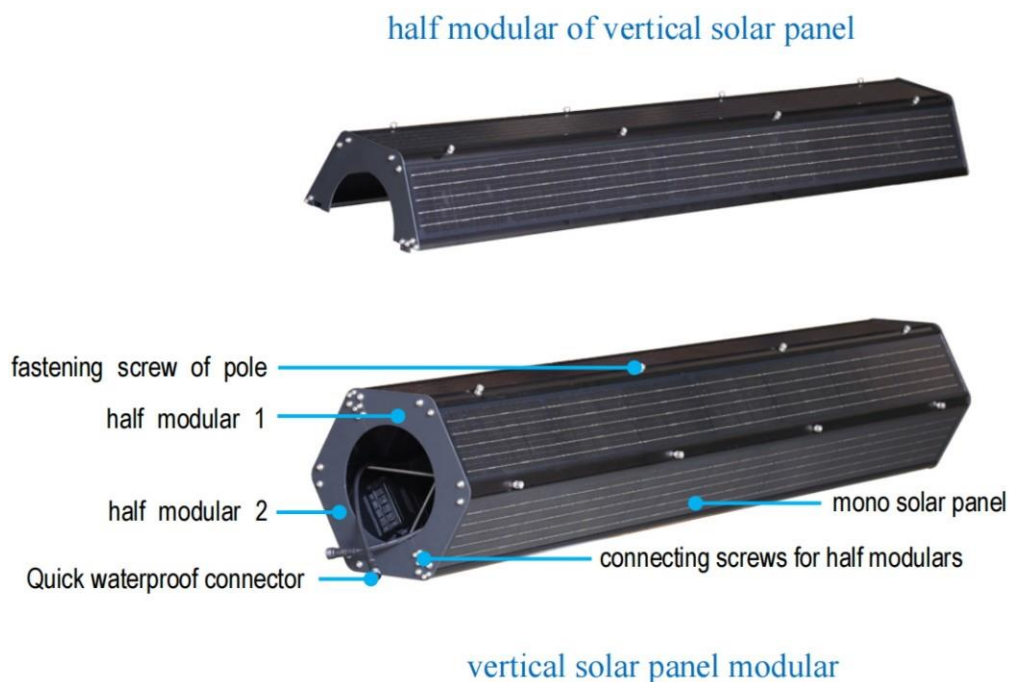
Item	120W	150W	200W
Material	Aluminum alloy	Aluminum alloy	Aluminum alloy
Dimensions	265*233*1112mm	265*233*1420mm	265*233*1750mm
Pmax	120W	150W	200W
Vmp	16.5V	18V	18V
Imp	7.3A	8.4A	11.1A
Solar panel	Mono solar panel	Mono solar panel	Mono solar panel
Solar cell efficiency	23%~24%	23%~24%	23%~24%
Cable	M141.0m	M141.0m	M141.0m
Working temp.	-40 ~+85	-40 ~+85	-40 ~+85
Lifespan	25 years	25 years	25 years
Weight	11Kg	17Kg	23Kg
Pole diameter	Φ60~120mm	Φ60~120mm	Φ60~120mm
IP protection	Ip66	Ip66	Ip66
Warranty	5 years	5 years	5 years

## Advantages of patent module structure design:

- Adopting a half modular design and production of vertical solar panel structure composed of three mono solar panels, it is no need for on-site assembly and soldering of solar panels;
- On the construction site, the two half modular vertical solar panels can be folded together to hold the lamp post and then form a vertical solar panel modular;
- The parallel connection of two half module vertical solar panels and the connection between the vertical solar panel module and the lamp head all use waterproof connectors, which are fast, convenient, and reliable;
- Using vertical solar panel modules for packaging and transportation, it has a small volume, reliable transportation, and low cost.



half modular 1





## Vertical solar panel module installation:

- Remove the connecting screws of the half modular and split the vertical solar panel modular into two half modulars, namely half modular 1 and half modular 2;

- Hold the lamp pole in the direction of the arrow between half modular 1 and half modular 2, and then use half modular connecting screws to combine the two half modulars of vertical solar panels into a vertical solar panel modular;

- Adjust the vertical solar panel modular to the appropriate height position on the lamp post, and then tighten the fastening screws of lamp pole (pay attention to adjusting the depth of the fastening screws of lamp pole to make the position of the lamp pole in the center). After tightening the fastening screws of the lamp pole in place, and then tighten the locking nut again

- Dock and tighten the equipped one to two waterproof cable connectors with the waterproof connectors of the half modulars.





## Application

Predestrian  
Walkway, Bus Stop Train  
Station, Shelters  
Gazebo, Outdoor  
Carpark

---

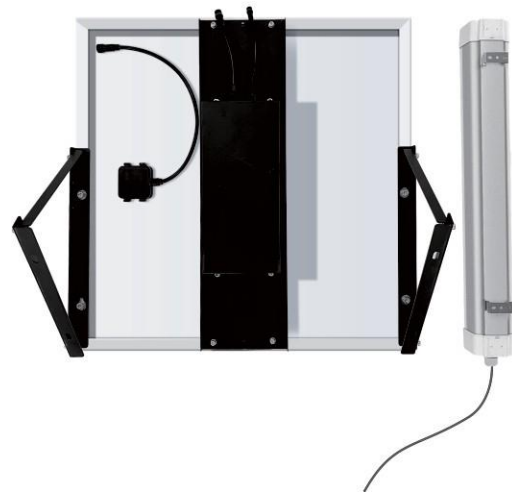
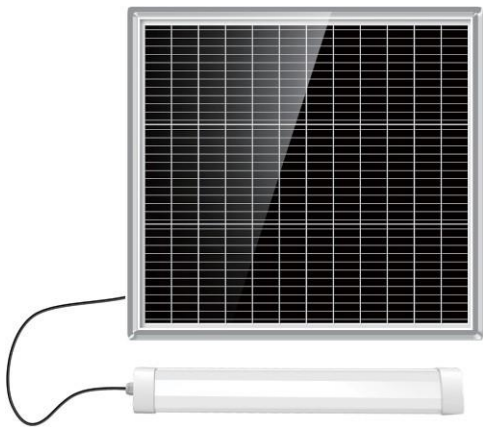
## Luminaire Characteristic

Housing	: Polycarbonate
Finishing	: Standard white
Solar panel	: Polycrystalline
Type	: Community type poly SolarLED
Ingress Protection (IP)	: IP67
Colour rendering (CRI)	: 270
Operating temperature range (Ta)	: -15°C~40°C
Colour temperature (CCT)	: 6000K

---

## Other CCT CRI available upon request

Nominal efficacy	: >150lm/W
Charging time	: 4.5 hours
Discharge time	: 12 hours/night
Working mode	: 12 hours



	NF-BT-15	NF-BT-20	NF-BT-30
Wattage	15W	20W	30W
Luminaire lumen	2250lm	3000lm	4500lm
Size of solar panel	60W	70W	80W
Lifetime of solar panel	20 Years		
Size of lithium battery	192Wh	230Wh	320Wh
Lifetime of battery	2000 Lifecycle		
charge time by Sun	5-6 Hours with strong sunlight		
Discharge time Full power	12 Hours		
Working mode	100% 2H,70% 2H,50% 1H,20% 8H		
Raining Day	Up to 3 Autonomy days		
Luminaire Dimension	670X86x70mm		
Solar panel dimension	695×515×30mm	720×680×30mm	820×680×30mm

\* The above ordering code is use on CCT-6000K

\* Other CCT CRI are available uponrequest



# SOLAR GARDEN LIGHT



## ■ Solar Garden Light NE-YL



### Features:

- ✓ Simple and stylish appearance is simple. 0 electricity, free wiring.
- ✓ Safe low voltage, no touch electricity, international safety standards.
- ✓ Lithium battery, controller and light source are integrated, very simple installation.
- ✓ Multi-core LED, extremely high efficient, more than 200LM/W for unit LED.
- ✓ Smart charge and discharge management, extend the lighting time, ensure lighting for 365 days
- ✓ Modular design, easy maintenance and replacement.

Model NO.	NF-YL-15	NF-YL-20	NF-YL-30
Lamp Power	8W	12W	15W
Solar Panel	15W	20W	30W
Lithium Battery	48WH	64WH	96WH
LED Quantity	28pcs	56pcs	84pcs
Luminous Flux	1200lm	1800lm	2600lm
CCT	6000-6500K		
CRI	>70Ra		
Charging Time	4-6 hours		
Working Time	2-4 rainy days		
Working Temperature	-20°C~60°C		
Lifespan	Yes		
Material IP Rating	≥50000hours		
Case Diameter	IP65		
Mounting Height	Pole/Wall mounted		
Mounting Distance	Die-Casting Aluminum		
	2-4m	3-4m	3-5m

## Features:

- ✔ Simple and stylish appearance is simple. 0 electricity, free wiring.
- ✔ Safe low voltage, no touch electricity, international safety standards.
- ✔ Lithium battery, controller and light source are integrated, very simple installation.
- ✔ Multi-core LED, extremely high efficient, more than 200LM/W for unit LED.
- ✔ Smart charge and discharge management, extend the lighting time, ensure lighting for 365 days
- ✔ Modular design, easy maintenance and replacement.



Model NO.	NF-XY-20	NF-XY-30	NF-XY-35
Lamp Power	10W	15W	18W
Solar Panel	20W	30W	35W
Lithium Battery	64WH	96WH	128WH
LED Quantity L	60pcs	60pcs	60pcs
uminous Flux	1500lm	2250lm	2800lm
CCT	6000-6500K		
CRI	>70Ra		
Charging Time Work	4-6 hours		
ing Time Work ing	2-4 rainy days		
Temperature Mate ria	-20°C~60°C Die-		
I	casting Aluminum		
Lifespan	≥50000hours		
IP Rating	IP65		
Mounting Way M	Wall/Pole mounted		
ounting Height	3-4m	3-5m	3-5m

## Features:

- ✔ Simple and stylish appearance is simple. 0 electricity, free wiring.
- ✔ Safe low voltage, no touch electricity, international safety standards.
- ✔ Lithium battery, controller and light source are integrated, very simple installation.
- ✔ Multi-core LED, extremely high efficient, more than 200LM/W for unit LED.
- ✔ Smart charge and discharge management, extend the lighting time, ensure lighting for 365 days
- ✔ Modular design, easy maintenance and replacement.



Model NO.	NF-PZ-A25	NF-PZ-A30
Lamp Power	10W	15W
Solar Panel	25W	30W
Lithium Battery	96WH	144WH
LED Quantity	90pcs	90pcs
Luminous Flux	1600lm	2400lm
CCT	6000-6500K	
CRI	>70Ra	
Charging Time	4-6 hours	
Working Time	2-4 rainy days	
Working Temperature	-20°C~60°C	
Material	Yes	
Lifespan IP	≥50000hours	
Rating	IP65	
Mounting Way	Pole mounted	
Mounting Height	3-5m	4-5m

## ■ AC/DC LED Street Light



DL-DOB



DL-YM



DL-JD



DL-TE



DL-MH



DL-XJD



DL-ZJ



DL-GR



# ■ Solar Camera



## ■ Solar Camera NF-2.5C-200Y

2.5G



### Features:

- ✓ Simple and stylish appearance is simple. 0 electricity, free wiring.
- ✓ Safe low voltage, no touch electricity, international safety standards.
- ✓ Lithium battery, controller and light source are integrated, very simple installation.
- ✓ Multi-core LED, extremely high efficient, more than 200LM/W for unit LED.
- ✓ Smart charge and discharge management, extend the lighting time, ensure lighting for 365 days
- ✓ Modular design, easy maintenance and replacement.

Model NO.	NF-2.5C-200Y-60	NF-2.5C-200Y-80
Lamp Power	60W	80W
Solar Panel	192WH	256W
Lithium Battery	2MP (1280*1080)	
LED Quantity	Zoom 5X	
Luminous Flux	4G Version	
CCT	Horizontal Angle 0°~355° / Vertical Angle 0°~92°	
CRI	80m	
Charging Time Working Time Working	Standard 32GB (Up to be 128GB)	
Temperature Remote Control	Phone APP / PC	
Lifespan	Aluminum alloy	
IP Rating Mounting Way Material	2.5 inch Dome Camera	
Mounting Height	DC12V 2A	
Working Temperature	Day: 1.5W; Night: 3W	
IP Rating	-20°C~60°C	
Mounting Height	IP65	
Mounting Height	3-4m	



## Features:

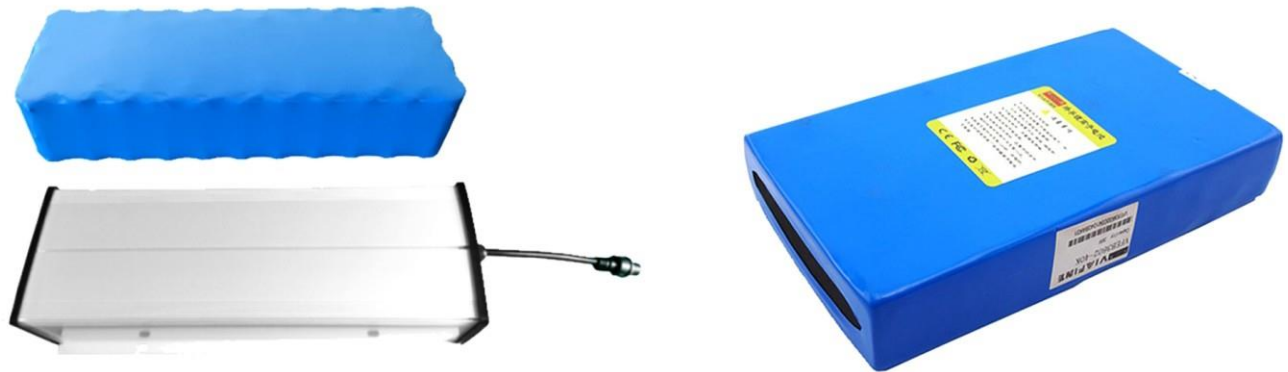
- ✔ Simple and stylish appearance is simple. 0 electricity, free wiring.
- ✔ Safe low voltage, no touch electricity, international safety standards.
- ✔ Lithium battery, controller and light source are integrated, very simple installation.
- ✔ Multi-core LED, extremely high efficient, more than 200LM/W for unit LED.
- ✔ Smart charge and discharge management, extend the lighting time, ensure lighting for 365 days
- ✔ Modular design, easy maintenance and replacement.

Model NO.	NF-4.5C-200Y-120
Solar Panel Lit	120W
Lithium Battery Capacity	576WH
Camera Pixels Zoom	2MP (1280*1080)
Network Factor	Zoom 20X 4G
Work Version Rotating	& Wi-Fi Version
Horizontal Angle Infrared	Horizontal Angle 0°~355° / Vertical Angle 0°~92°
Distance Storage	80m
Storage Connection	Standard 32GB ( Up to be 128GB )
Access Material	Phone APP / PC
Camera Dimension	Aluminum alloy
Input voltage Power	4.5 inch Dome Camera
Power	DC12V 2A
Working Temperature	Day: 10W; Night: 15W
IP Rating Installation	-20°C~60°C
Protection Height	IP65
	5-7m

# Lithium Battery Pack For Solar Light



## ■ Lithium Battery Pack For Solar Light



## ■ General Specifications

Model NO.	Nominal Voltage (V)	Nominal Capacity (Ah)	Energy (WH)	Customized Size
DL-LFP0324	3.2	24	76	Yes
DL-LFP0336	3.2	36	115	Yes
DL-LFP0340	3.2	40	128	Yes
DL-LFP0348	3.2	48	153	Yes
DL-LFP0360	3.2	60	192	Yes
DL-LFP0372	3.2	72	230	Yes
DL-LFP0380	3.2	80	256	Yes
DL-LFR1215	12.8	15	192	Yes
DL-LFR1220	12.8	20	256	Yes
DL-LFR1230	12.8	30	384	Yes
DL-LFR1240	12.8	40	512	Yes
DL-LFR1245	12.8	45	576	Yes
DL-LFR1250	12.8	50	640	Yes
DL-LFR1218	12.8	18	230	Yes
DL-LFR1224	12.8	24	307	Yes
DL-LFR1230	12.8	30	384	Yes
DL-LFR1236	12.8	36	460	Yes
DL-LFR1242	12.8	42	537	Yes
DL-LFR1248	12.8	48	614	Yes

- Note :
1. Standard red and black AWG wire.
  2. Waterproof Cable is available.
  3. Could be equipped with the controller and battery box.



# ■ Lithium Battery for Lead-acid Replacement

Model NO.	Nominal Voltage (V)	Nominal Capacity (Ah)	Energy (WH)	Customized Size
DL-1260	12.8	60	768	Yes
DL-1280	12.8	80	1024	Yes
DL-12100	12.8	100	1280	Yes
DL-12200	12.8	200	2560	Yes
DL-25100	25.6	100	2560	Yes
DL-25200	25.6	200	5120	Yes

Note: Any other specified capacities are acceptable.

## Renewable Energy Storage Systems



Solar Power Systems



Wind Power Systems



RV



PHEV

## Motive Power



AVG



Wheelchairs



Golf Carts



Scissor lift




**Portable  
Power  
Station**


# 300W Portable Power Generator





Model No.	HS300
Inverter Rated/Peak Power	300W/600W
Rated Battery Capacity AC	260Wh/12.8V
output voltage	220Vac/50Hz ( 110V optional )
DC charging interface	1*30A
PV input voltage	16-50V
Max. PV input power	80W Max
Battery Chemical	LiFePO4 Battery
Inverter efficiency	>90%
AC output	1*110V/220V,60Hz/50Hz
DC output	1*USB 5V 1.5A 1*Type C 20V 1.3A
Operating Temperature	0°C~60°C
Dimension Certification	242*140*226mm
Protection	UN38.3(Cell)/IEC62133(Cell) Overcharge and overdischarge/Overcurrent protection Overload protection/Short circuit protection/Fault protection


## ► FEATURES & BENEFITS


 **Longer cycle life**  
6000 cycles @80% DoD for effectively lower total cost of ownership.


 **Multiple Discharging Modes**  
USB Output: 5V2A Type C Output: Max. 20W/30W  
AC Output: 220V/300W or 110V/300W(optional)


 **Maintenance-free**  
Low maintenance batteries with stable chemistry.


 **Lightweight & Safety**  
Automotive-grade safety performance Lithium Iron Phosphate battery integrated which has more Wh/Kg

 **Built in circuit protection**  
Protection Circuit Module (PCM) is incorporated against abuse.

 **Pure sine wave**  
110V or 220V AC pure sine wave inverter

 **Solar charge Modes (Optional)**  
MPTT integrated

 **LED Emergency Light (part)**  
3W LED emergency Light

 **AC&DC output**  
DC & 110V or 220V AC output



# 600W Portable Power Generator



Model No.	HS600
Inverter Rated/Peak Power	600W/1200W
Rated Battery Capacity AC	576Wh/12.8V
output voltage	220Vac/50Hz ( 110V optional )
DC charging interface	1*30A
PV input voltage	16-60V
Max. PV input power	150W Max
Battery Chemical	LiFePO4 Battery
Inverter efficiency	>90%
AC output	2*110V/220V,60Hz/50Hz
DC output	1* USB 5V 1.5A 1* Type C Max.20V 1.3A
Operating Temperature	0°C~60°C
Dimension Certification	285*178*220mm UN38.3(Cell)/IEC62133(Cell)
Protection	Overcharge and overdischarge/Overcurrent protection Overload protection/Short circuit protection/Fault protection

## ► FEATURES & BENEFITS



### Longer cycle life

6000 cycles @80% DoD for effectively lower total cost of ownership.



### Multiple Discharging Modes

USB Output: 5V2A Type C Output: Max. 20W/30W  
AC Output: 220V/300W or 110V/300W(optional)



### Maintenance-free

Low maintenance batteries with stable chemistry.



### Lightweight & Safety

Automotive-grade safety performance Lithium Iron Phosphate battery integrated which has more Wh/Kg



### Built in circuit protection

Protection Circuit Module (PCM) is incorporated against abuse.



### Pure sine wave

110V or 220V AC pure sine wave inverter



### Solar charge Modes (Optional)

MPTT integrated



### LED Emergency Light (part)

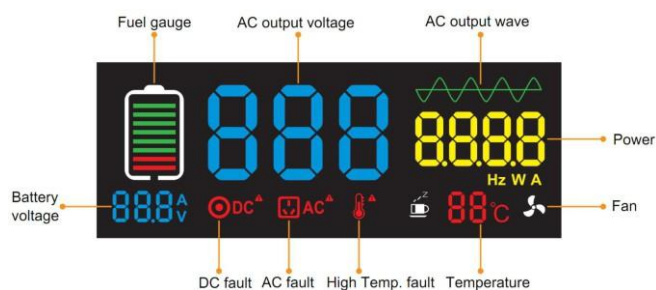
3W LED emergency Light



### AC&DC output

DC & 110V or 220V AC output

# 1000W Portable Power Generator



Model No.	HS1000
Inverter Rated/Peak Power	1000W/2000W
Rated Battery Capacity	1024Wh/12.8V
AC output voltage	220Vac/50Hz ( 110V optional )
DC charging interface	2*45A
PV input voltage	16-60V
Max. PV input power	200W Max (optional)
Battery Chemical	LiFePO4 Battery
Inverter efficiency	>90%
AC output	3*110V/220V,60Hz/50Hz
DC output	2* USB 5V 1.5A 2* Type C Max.20V 1.3A
Operating Temperature	0°C~60°C
Dimension Certification	400*210*275mm UN38.3(Cell)/IEC62133(Cell)
Protection	Overcharge and overdischarge/Overcurrent protection Overload protection/Short circuit protection/Fault protection

## ► FEATURES & BENEFITS



### Longer cycle life

6000 cycles @80% DoD for effectively lower total cost of ownership.



### Multiple Discharging Modes

USB Output: 5V2A Type C Output: Max. 20W/30W  
AC Output: 220V/300W or 110V/300W(optional)



### Maintenance-free

Low maintenance batteries with stable chemistry.



### Lightweight & Safety

Automotive-grade safety performance Lithium Iron Phosphate battery integrated which has more Wh/Kg



### Built in circuit protection

Protection Circuit Module (PCM) is incorporated against abuse.



### Pure sine wave

110V or 220V AC pure sine wave inverter



### Solar charge Modes (Optional)

MPTT integrated



### LED Emergency Light (part)

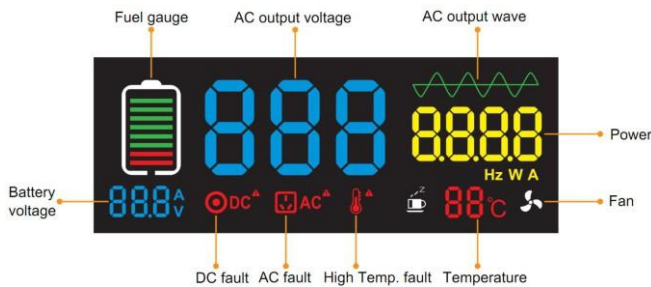
3W LED emergency Light



### AC&DC output

DC & 110V or 220V AC output

# 1500W Portable Power Generator



Model No.	HS1500
Inverter Rated/Peak Power	1500W/3000W
Rated Battery Capacity AC	1536Wh/12.8V
output voltage	220Vac/50Hz ( 110V optional )
DC charging interface	2*Max 45A
PV input voltage	16~60V
Max. PV input power	300W Max(optional)
Battery Chemical	LiFePO4 Battery
Inverter efficiency	>90%
AC output	3*110V/220V,60Hz/50Hz
DC output	2* USB 5V 1.5A 2* Type C Max.20V 1.3A
Operating Temperature	0°C~60°C
Dimension Certification	400*210*275mm UN38.3(Cell)/IEC62133(Cell)
Protection	Overcharge and overdischarge/Overcurrent protection Overload protection/Short circuit protection/Fault protection

## ► FEATURES & BENEFITS



### Longer cycle life

6000 cycles @80% DoD for effectively lower total cost of ownership.



### Multiple Discharging Modes

USB Output: 5V2A Type C Output: Max. 20W/30W  
AC Output: 220V/300W or 110V/300W(optional)



### Maintenance-free

Low maintenance batteries with stable chemistry.



### Lightweight & Safety

Automotive-grade safety performance Lithium Iron Phosphate battery integrated which has more Wh/Kg



### Built in circuit protection

Protection Circuit Module (PCM) is incorporated against abuse.



### Pure sine wave

110V or 220V AC pure sine wave inverter



### Solar charge Modes (Optional)

MPTT integrated



### LED Emergency Light (part)

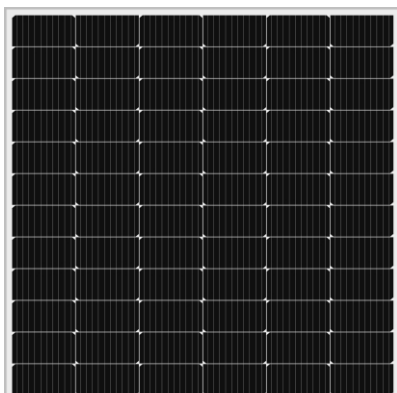
3W LED emergency Light



### AC&DC output

DC & 110V or 220V AC output

# 3000W Portable Power Generator



Model No.	HS3000
Inverter Rated/Peak Power	3000W/6000W
Rated Battery Capacity AC	2560Wh/25.6V
output voltage	220Vac/50Hz ( 110V optional )
AC charge/input power	800W ( AC charger adapter integarted )
PV input voltage	≤85V
Max. PV input power	2000W max
Battery Chemical	LiFePO4 Battery
Inverter efficiency	>90%
AC output	3*110V/220V,60Hz/50Hz
DC output	2* USB 5V 2A 2* Type C Max.20V 30W ( Support TYPE-C fast charging)
Operating Temperature	0°C~60°C
Dimension Certification	515*335*265mm
	UN38.3(Cell)/IEC62133(Cell)
Protection	Overcharge and overdischarge/Overcurrent protection Overload protection/Short circuit protection/Fault protection

## ► FEATURES & BENEFITS



### Longer cycle life

6000 cycles @80% DoD for effectively lower total cost of ownership.



### Multiple Discharging Modes

USB Output: 5V2A Type C Output: Max. 20W/30W  
AC Output: 220V/300W or 110V/300W(optional)



### Maintenance-free

Low maintenance batteries with stable chemistry.



### Lightweight & Safety

Automotive-grade safety performance Lithium Iron Phosphate battery integrated which has more Wh/Kg



### Built in circuit protection

Protection Circuit Module (PCM) is incorporated against abuse.



### Pure sine wave

110V or 220V AC pure sine wave inverter



### Solar charge Modes (Optional)

MPTT integrated



### LED Emergency Light (part)

3W LED emergency Light



### AC&DC output

DC & 110V or 220V AC output

# 5000W Portable Power Generator



Model No.	HS5000
Inverter Rated/Peak Power	5000W/10000W
Rated Battery Capacity	5120Wh/51.2V
AC output voltage	220Vac/50Hz ( 110V optional )
AC charge/input power	1100W ( AC charger adapter integrated )
PV input voltage	≤85V
Max. PV input power	2500W Max
Battery Chemical	LiFePO4 Battery
Inverter efficiency	>90%
AC output	4*110V/220V,60Hz/50Hz
DC output	1* USB 5-18V Max 18W 1* Type C Max.20V 60W ( Support TYPE-C fast charging)
Operating Temperature	0°C~60°C
Dimension Certification	493*295*728mm UN38.3(Cell)/IEC62133(Cell)
Protection	Overcharge and overdischarge/Overcurrent protection Overload protection/Short circuit protection/Fault protection

## ► FEATURES & BENEFITS



### Longer cycle life

6000 cycles @80% DoD for effectively lower total cost of ownership.



### Multiple Discharging Modes

USB Output: 5V2A Type C Output: Max. 20W/30W  
AC Output: 220V/300W or 110V/300W(optional)



### Maintenance-free

Low maintenance batteries with stable chemistry.



### Lightweight & Safety

Automotive-grade safety performance Lithium Iron Phosphate battery integrated which has more Wh/Kg



### Built in circuit protection

Protection Circuit Module (PCM) is incorporated against abuse.



### Pure sine wave

110V or 220V AC pure sine wave inverter



### Solar charge Modes (Optional)

MPTT integrated



### LED Emergency Light (part)

3W LED emergency Light



### AC&DC output

DC & 110V or 220V AC output

## ■ 4U/5U Rack -mounted energy storage battery module

- ✔ Lithium iron phosphate battery.
- ✔ High safety and efficiency.
- ✔ Excellent quality Brand new Grade A cells, designed life 20 years.
- ✔ Support multi-layer overlay style.
- ✔ Deep cyclc, No memory, Long cycle life.
- ✔ High efficiency storage performance.
- ✔ Can be expanded capacity up to 10 units in parallel.
- ✔ RS485/CAN, compatible with most brand inverters.
- ✔ Easy to install.



Lithium Iron Phosphate Energy Storage  
Battery For Residential & Commercial use

## General Specifications

Item NO.	NF-LFP 51.2V100AH	NF-LFP 51.2V200AH
Battery Capacity	5.12 kWh	10.24 kWh
Battery Type	LiFePO4	LiFePO4
Rated Battery Voltage	51.2V	51.2V
Battery Capacity Cons	100Ah	200Ah
stant Charging Current	100A(1C)	150A(0.75C)
Constant Discharging Current	100A(1C)	200A(1C)
Depth of Discharging Par	95%	
allel Capacity	1-10	
Life-Span (25 ) Oper	> 6000 cycles	
ating Temperature Stor	Charge: 0 ~ 60 , Discharge: -15 ~ 65	
age Temperature Cas	-20 ~ 40	
eMaterial Installa	Metal	
t ionWay Communicat	Rack-mounted	
ion	RS485/CAN/ Customized	
Ref. Size (1 Module)	482*480*175mm (±2mm) (4U)	482*480*175mm (±2mm) (4U)
Weight	45KG	90KG



**Battery Module -48100**

5.12kWh / 51.2V 100Ah



**Battery Module -48100**

5.12kWh / 51.2V 100Ah

UP to 10 in parallels

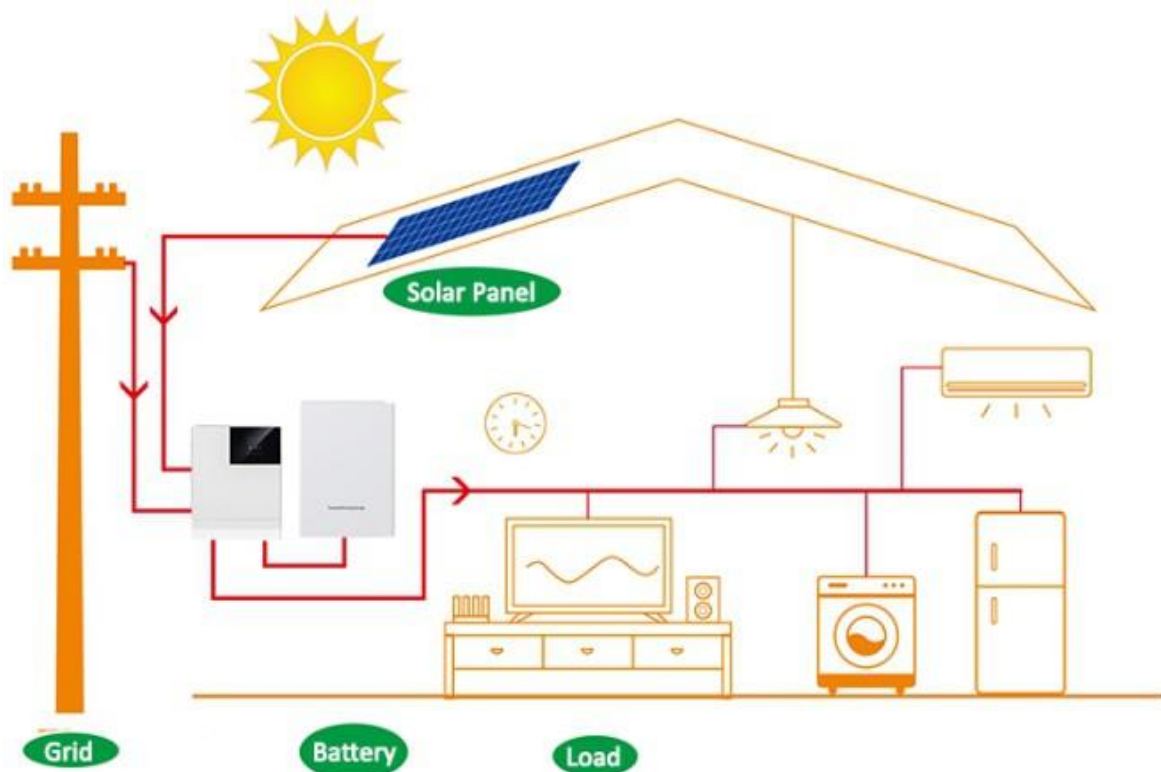
## Lithium Energy Storage Battery

Model	Capacity	5.12kWh	10.24kWh	15.36kWh	20.48kWh	25.6kWh
NF-LFP 51.2V100AH	5.12kWh	1 unit	2 units	3 units	4 units	5 units
NF-LFP 51.2V200AH	10.24kWh	/	1units	/	2 units	/

Model	Capacity	30.72kWh	35.48kWh	40.96kWh	46.08kWh	51.2kWh
NF-LFP 51.2V100AH	5.12kWh	6 units	7 units	8 units	9 units	10 units
NF-LFP 51.2V200AH	10.24kWh	3 units	/	4 units	/	5 units

## 51.2V Wall -mounted energy storage battery modules

- ✓ 5KWH 51.2V100AH LiFePO4 battery modules.
- ✓ Excellent quality Brand new Grade A cells, designed life 20 years.
- ✓ 5KW Maximum output.
- ✓ Built-in Smart BMS.
- ✓ Can be expanded capacity up to 10 units in parallel.
- ✓ RS485/CAN, compatible with most brand inverters.
- ✓ Easy to install.



Lithium Iron Phosphate Energy Storage Battery  
For Residential & Commercial use



## General Specifications

Battery Capacity	5.12 kWh	10.24 kWh
Rated Battery Voltage	51.2V	51.2V
stant Charging Current	100A(1C)	150A(0.75C)
Depth of Discharging Par	95%	
Life-Span (25 ) Oper	> 6000 cycles	
age Temperature Cas	-20°C~40°C	
n Way C ommunication	Rack-mounted	
Weight	665*400*180mm	640*400*235mm

**Battery Module**

51.2V 100Ah


**5.12kWh**

**Battery Module**

51.2V 200Ah

**10.24kWh**

UP to 10 inparallels



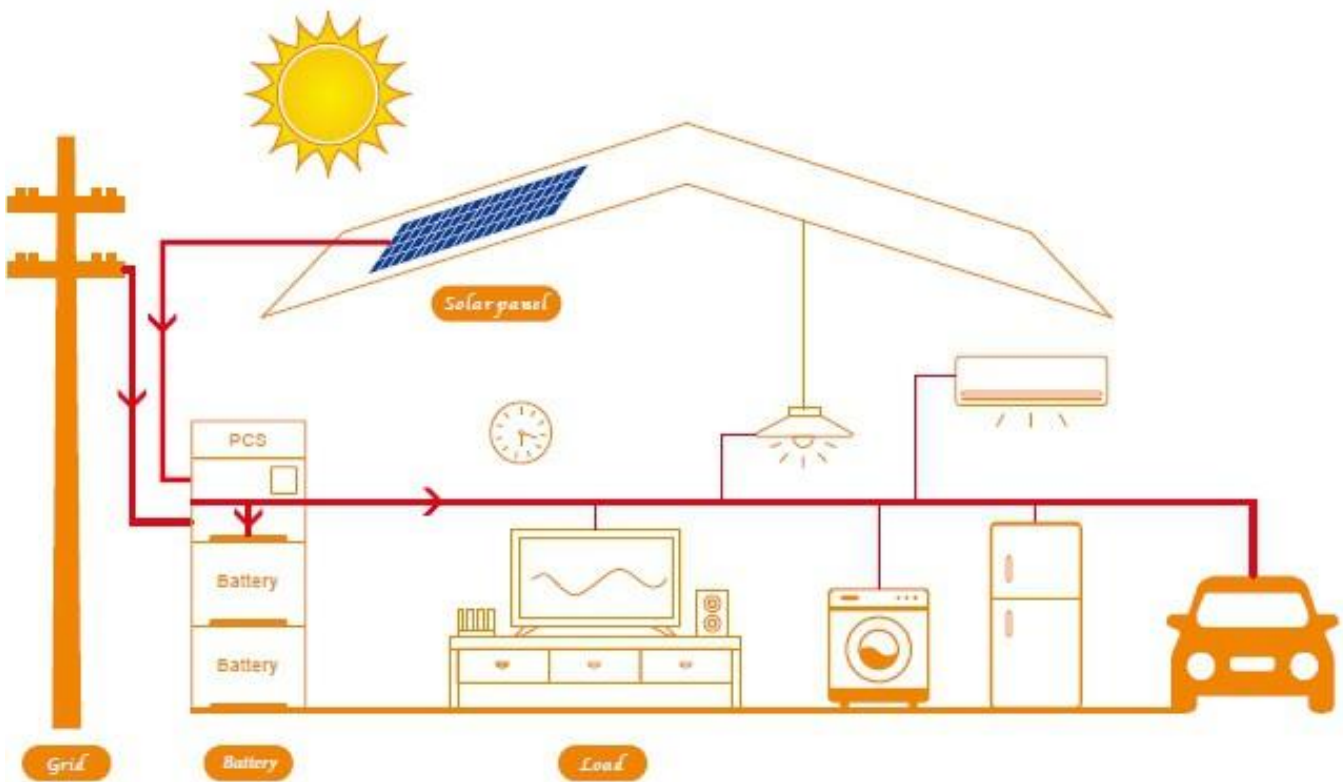
## Lithium Energy Storage Battery

Model	Capacity	5.12kWh	10.24kWh	15.36kWh	20.48kWh	25.6kWh
NF-LFP 51.2V100AH-G	5.12kWh	1 unit	2 units	3 units	4 units	5 units
NF-LFP 51.2V200AH-G	10.24kWh	/	1units	/	2 units	/

Model	Capacity	30.72kWh	35.48kWh	40.96kWh	46.08kWh	51.2kWh
NF-LFP 51.2V100AH-G	5.12kWh	6 units	7 units	8 units	9 units	10 units
NF-LFP 51.2V200AH-G	10.24kWh	3 units	/	4 units	/	5 units

## 5KWH Floor -Mounted energy storage battery modules

- ✔ Lithium iron phosphate battery.
- ✔ High safety and efficiency.
- ✔ Excellent quality Brand new Grade A cells, designed life 20 years.
- ✔ Built-in Smart BMS.
- ✔ Can be expanded capacity up to 6 units in parallel.
- ✔ RS485/CAN, compatible with most brand inverters.
- ✔ Easy to install.



Lithium Iron Phosphate Energy Storage Battery  
For Residential & Commercial use

## General Specifications

Item NO.	NF-LFP51.2V100Ah
Battery Capacity	5.12 kWh
Battery Type	LiFePO4
Rated Battery Voltage	51.2V
Battery Capacity Constant	100Ah
Constant Charging Current	100A(1C)
Constant Discharging Current	100A(1C)
Depth of Discharging Parallel Capacity	95%
Life-Span (25 °C) Operation	> 6000 cycles
Operating Temperature Storage	Charge: 0 ~ 60 °C, Discharge: -15 ~ 65 °C
Operating Temperature Case	-20 ~ 40 °C
Installation Material	Metal
Installation Way	Floor Mounted
Communication	RS485/CAN/ Customized
Ref. Size (1 Module)	510*450*200mm
Weight	45KG

**Battery Module-B1**

51.2V 100Ah

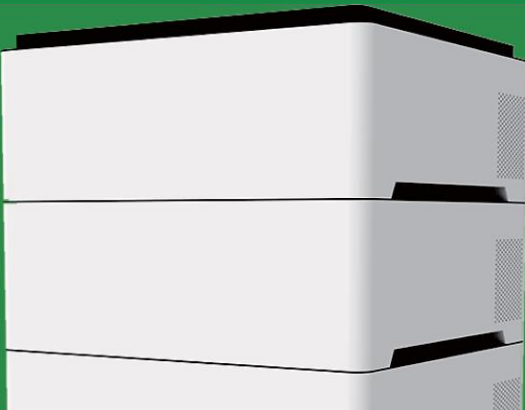
**5.12kWh**

**Battery Module\*6**

51.2V 600Ah

**30.72kWh**

UP to 10 in parallels



## Lithium Energy Storage Battery

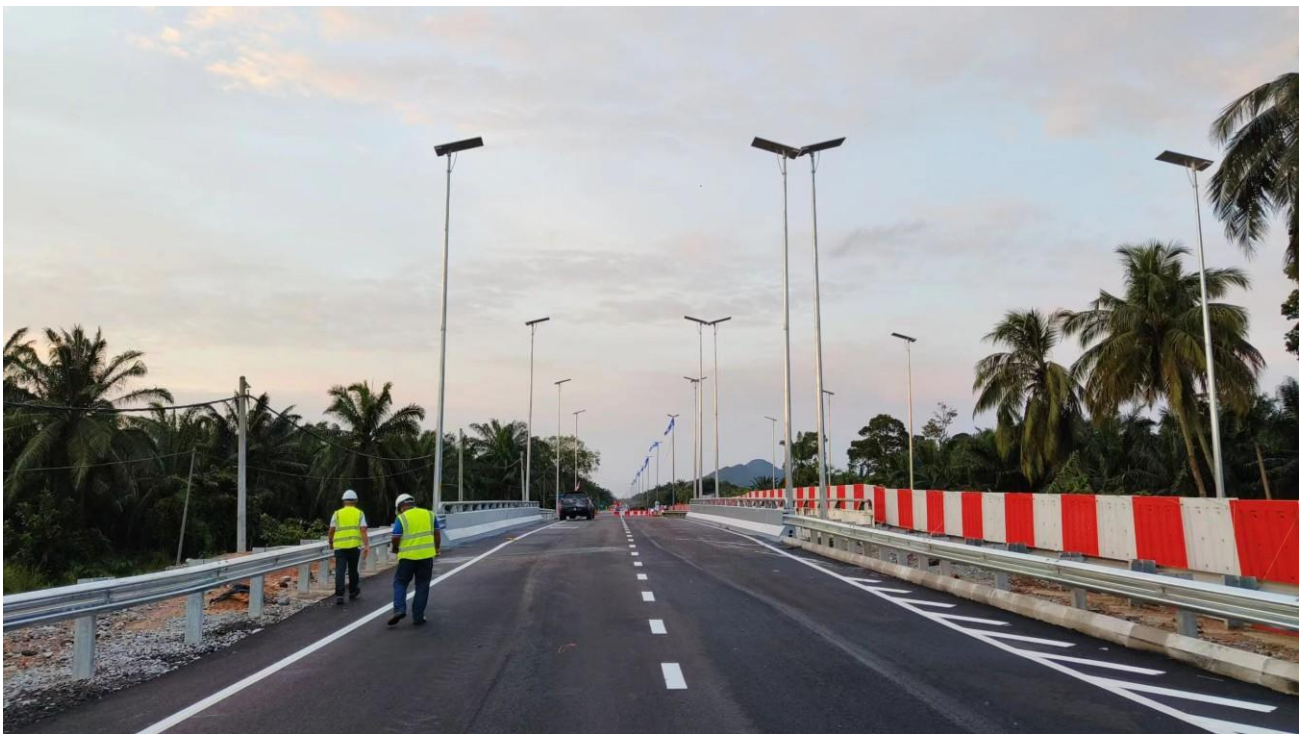
Model	Capacity	5.12kWh	10.24kWh	15.36kWh	20.48kWh	25.6kWh	30.72kWh
DL-LFP51.2V100Ah	5.12kWh	1 unit	2 units	3 units	4 units	5 units	6 units

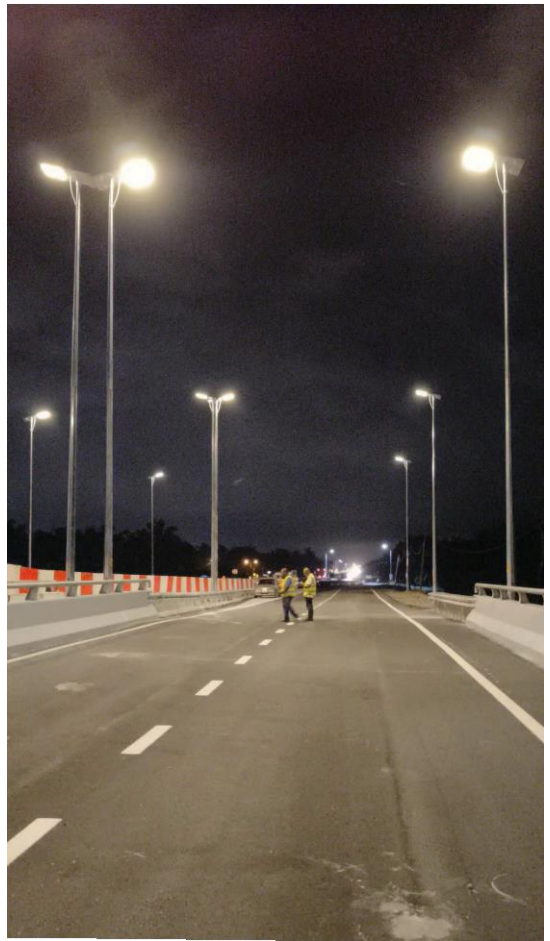
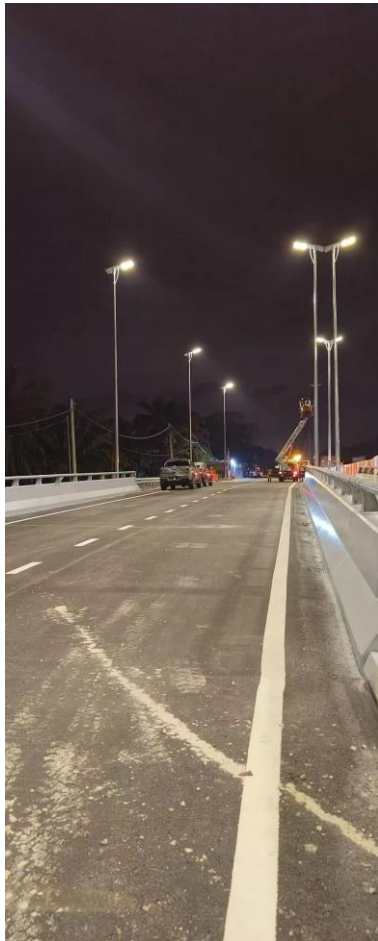


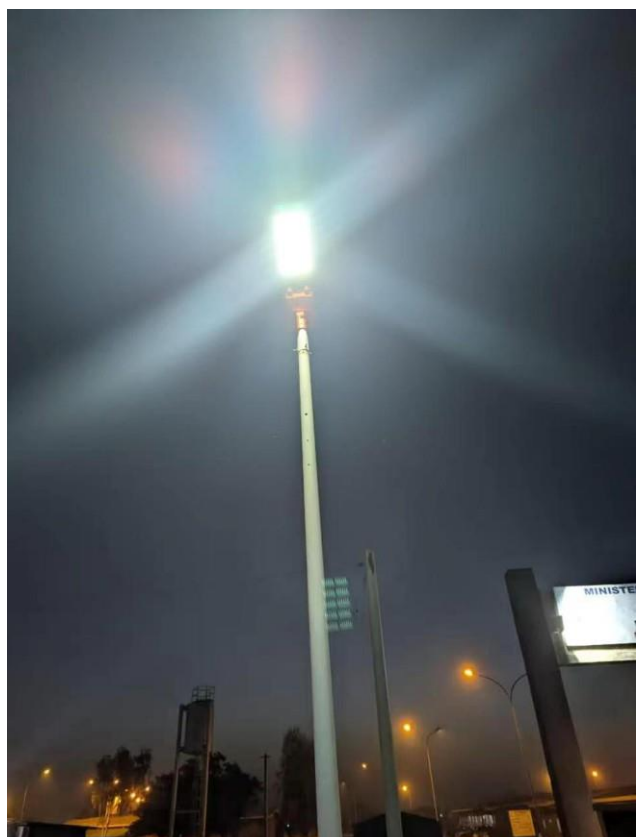
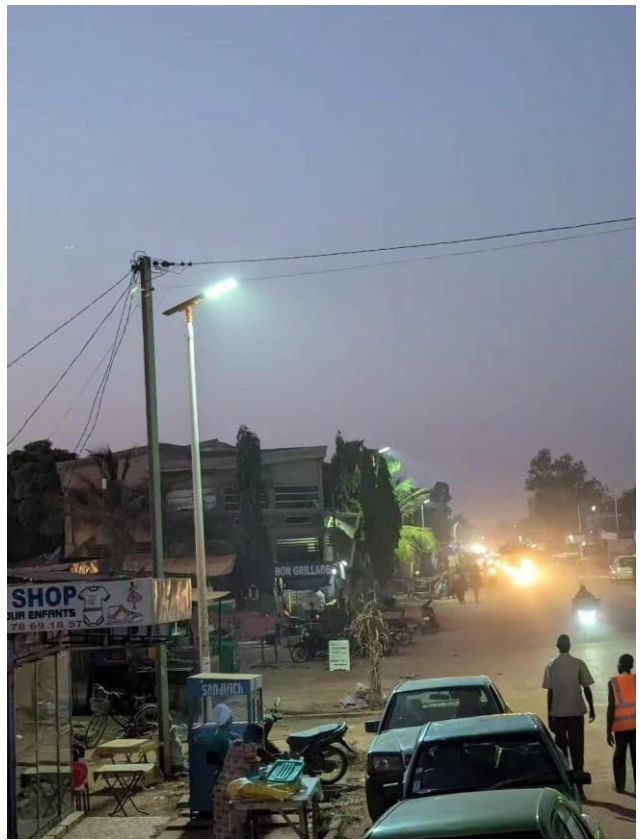
*Nova Future*















## *Nova Future*

*Nova Future Technology Limited  
established in 2016 is a photovoltaic  
enterprise specializing in the R&D of solar  
light and energy storage system*

